

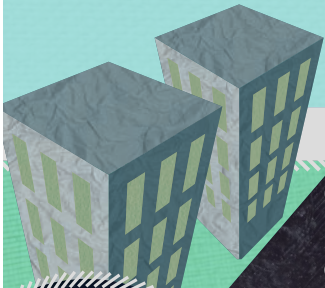
# Great Lakes Community Action Partnership 2023 ANNUAL REPORT



- 1,989** Utility customers set up with affordable payment plans based on income
- 2,377** Households helped with summer or winter energy utility assistance, as well as homes assisted with water utility expenses
- 1,352** Families offered housing assistance to prevent homelessness, including 177 veteran households



- 1,658** Children educated through Early Head Start, Head Start, and Migrant & Seasonal Head Start programs
- 108** Students enrolled in Afterschool/ Summer School programs at Clyde Middle and Fremont High Schools



- 95** Individuals provided financial literacy skills education, and income supports, through the Financial Opportunity Center® program

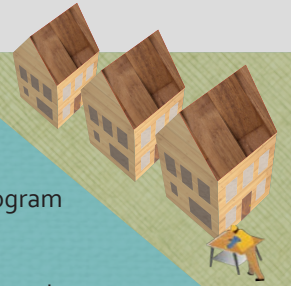
- 238** Individuals who received in-demand career training through Job Corps Scholars, WorkAdvance, and youth employment programs



- 174** Homes made more energy-efficient through the Home Weatherization Assistance Program

- 130** Homes repaired through Community Housing Impact & Preservation services

- 493** Home energy assessments provided through the Electric Partnership Program



- 674** Communities helped through Rural Community Assistance Program (RCAP) services
- 4,427** Local government officials, utility personnel, and other participants who took part in RCAP trainings in seven states
- 118** Rural residents provided with well assessments, septic system replacements, and lead service inventories for residents
- 123** Communities that utilized Geographic Information System (GIS) services to map utility lines and fulfill other needs
- 90** Participants from six countries involved in international programs offered by the Great Lakes Consortium for International Training & Development



- 934** Seniors assisted through nutrition, education, and other programs.
- 494** Seniors served with home-delivered daily lunches through Meals on Wheels
- 13** Health and safety-related home repairs provided to through Senior Helping Hands
- 39,508** One-way trips provided to riders by TRIPS Public Transportation demand-response and Fremont Shuttle services



Great Lakes  
COMMUNITY ACTION  
PARTNERSHIP

# Statement of Financial Position

GLCAP's Statement of Financial Position as of September 30, 2023. A complete financial statement with an auditor's report is available at [glcap.org/about](http://glcap.org/about).

## ASSETS

### Current Assets

Cash and Cash Equivalents	\$5,334,524
Investments	\$2,395,295
Accounts Receivable	\$280,216
Grants Receivable	\$7,873,750
Revolving Loans Receivable — Current, Net	\$24,711
Loans Receivable — Current	\$12,829
Prepaid Expenses	\$522,694
Advance Deposit	\$378,528
Other Assets	\$127,672
<b>Total Current Assets</b>	<b>\$16,950,219</b>

<b>Property and Equipment, Net</b>	<b>\$8,610,770</b>
------------------------------------	--------------------

### Other Assets

Revolving Loans Receivable — Long-Term, Net	\$327,078
Loans Receivable — Long-Term	\$120,695
Loans Receivable — Related Parties, Net	\$2,420,152
Right-of-use Assets — Operating Leases	\$2,037,907
Investments in Housing Projects	\$2,432,035
<b>Total Other Assets</b>	<b>\$7,337,867</b>

<b>TOTAL ASSETS</b>	<b>\$32,898,856</b>
---------------------	---------------------

## LIABILITIES AND NET ASSETS

### Current Liabilities

Notes Payable — Current Portion	\$128,779
Loans Payable — Current Portion	\$12,829
Operating Lease Liability — Current Portion	\$567,117
Accounts Payable	\$1,440,158
Accrued Payroll and Related Expenses	\$729,057
Accrued Vacation	\$1,096,994
Refundable Advance Liability	\$3,715,231
Other Liabilities	\$595,415
<b>Total Current Liabilities</b>	<b>\$8,294,580</b>

### Long-term Liabilities

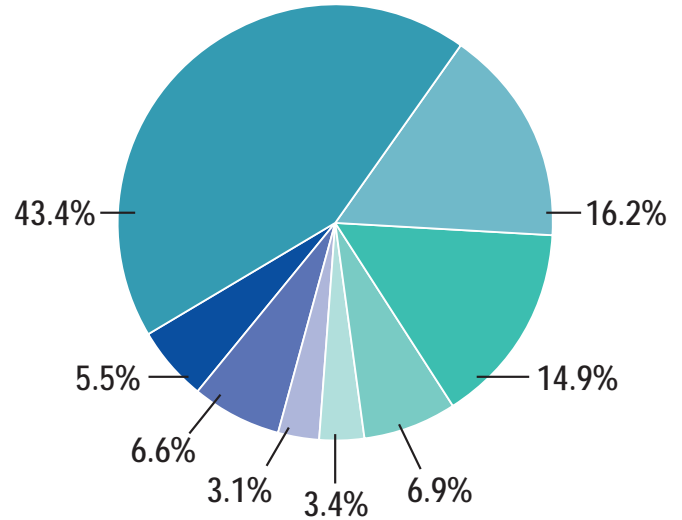
Notes Payable — Net of Current Portion	\$3,298,797
Loans Payable — Net of Current Portion	\$120,695
Loans Payable — Related Parties	\$2,420,152
Operating Lease Liability — Net of Current Portion	\$1,475,174
<b>Total Long-Term Liabilities</b>	<b>\$7,314,818</b>
<b>Total Liabilities</b>	<b>\$15,609,398</b>

### Net Assets

Net Assets Without Donor Restrictions	\$14,341,046
Net Assets Without Donor Restrictions (Designated for Self-Insurance)	\$1,670,932
Net Assets Without Donor Restrictions (Board Designated)	\$311,750
<b>Total Net Assets Without Donor Restrictions</b>	<b>\$16,323,728</b>
Net Assets With Donor Restrictions	\$965,730
<b>Total Net Assets</b>	<b>\$17,289,458</b>

<b>TOTAL LIABILITIES AND NET ASSETS</b>	<b>\$32,898,856</b>
-----------------------------------------	---------------------

## Expenses by Program Area



Child Development	\$23,797,706
Adult and Youth Development, Housing & Workforce Development	\$8,882,134
Community Development	\$8,169,199
Housing and Energy	\$3,763,492
Seniors	\$1,838,682
Transportation	\$1,707,521
Management and general	\$3,619,001
Corporate programs and fundraising	\$3,021,918
<b>Total</b>	<b>\$54,799,653</b>



Helping Communities Thrive, One Neighbor at a Time



### GLCAP Headquarters

127 S. Front St., Fremont, Ohio 43420

1-800-775-9767 | [www.glcap.org](http://www.glcap.org)